

# Emergency Information

## Westchester County

### How Would You Know There Is An Emergency?

Special sirens have been installed to alert you to an emergency. The sirens are loud, high-pitched alarms which would be sounded for three to five minutes without interruption.

In areas where sirens may not be heard, police car public address systems or "single station alert" radios are used.

If you hear the sirens, turn on your radio or TV to one of the Emergency Alert System (EAS) stations listed here. You should take only the actions advised in these official EAS messages.

WFAN-AM	660	kHz	WRRV-FM	92.7	MHz
WABC-AM	770	kHz	WOXR-FM	96.3	MHz
WCBS-AM	880	kHz	WHUD-FM	100.7	MHz
WFAS-AM	1230	kHz	WFAS-FM	103.9	MHz
WALL-AM	1340	kHz	WCBS-TV	Ch 2	TV
WLN-AM	1420	kHz	WNBC-TV	Ch 4	TV
			WNYW-TV	Ch 5	TV
			WABC-TV	Ch 7	TV

Emergency information could also be carried on the following stations:

WRKL-AM	910	kHz	WNEW-FM	102.7	MHz
WTBO-AM	1110	kHz	WGNV-FM	103.1	MHz
WGNV-AM	1220	kHz	WAXB-FM	105.5	MHz
WRCR-AM	1300	kHz	WWXY-FM	107.1	MHz
NEWS-12	Ch 12	Cable			

### What Would You Be Asked To Do?

In order to give you the greatest degree of protection, instructions will be given by county or state officials based on their consideration of all factors. The instructions on the EAS stations will refer to Emergency Response Planning Areas within the Westchester County emergency planning zone. Since instructions for different Planning Areas may be different, please check the map to identify your area.

### You Might Be Advised To:

#### Stay Indoors

If the people in your Planning Area are advised to stay indoors, please go inside the nearest building and limit ways that air gets into the building (close windows and doors, turn off air conditioners, for example).

#### Or Leave The Area

If people in your Planning Area are advised to leave temporarily, please take personal belongings and travel by designated routes shown on the map or by bus routes indicated on the back.

### Where Would You Get Assistance?

If residents in your Planning Area are advised to leave their homes, you should go to the home of a friend or relative out-side the emergency planning zone, or to the General Population Reception Center designated for your area. Follow the evacuation route associated with that center.

The Reception Centers for your area are shown on this map. In some instances, the assignment of Reception Centers may vary, depending on conditions, from those identified above the map. Residents should listen closely to an Emergency Alert System (EAS) station to ensure they are going to the appropriate Reception Center. If changes are made, they will be announced.

For **non-emergency** questions and general information concerning these preparations, please call the toll free number given below during business hours, Monday through Friday.

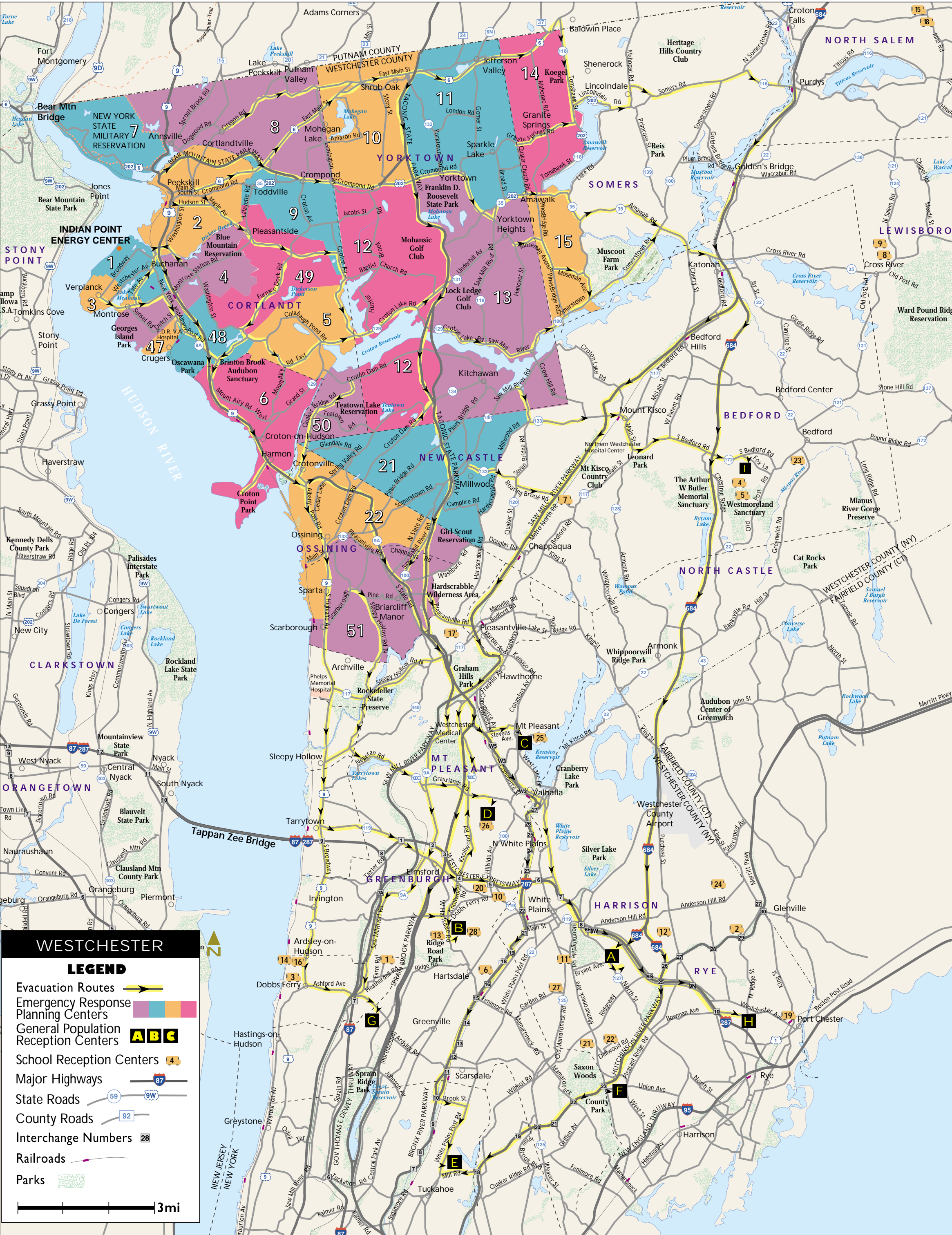
**Westchester County**  
**Department of Emergency Services**  
**Office of Emergency Management**  
**4 Dana Road**  
**Valhalla, NY 10595-1548**  
**1-800-942-1457**

**Westchester County-**  
**[www.westchestergov.com/indianpoint](http://www.westchestergov.com/indianpoint)**  
**New York State Emergency Management Office-**  
**[www.nysemo.state.ny.us](http://www.nysemo.state.ny.us)**  
**Entergy Nuclear Northeast-**  
**[www.enterygnuclear.com](http://www.enterygnuclear.com)**

## Emergency Response Planning Areas (ERPA) & General Population Reception Centers

Check the map below or log on to [www.westchestergov.com/indianpoint](http://www.westchestergov.com/indianpoint) and enter your address to determine your Emergency Response Planning Area

Planning Area #	Community	General Population Reception Center	Planning Area #	Community	General Population Reception Center	Planning Area #	Community	General Population Reception Center
1	Village of Buchanan	<b>A</b> White Plains High School 550 North Street, White Plains	10	Northwestern Yorktown (Mohegan Lake and Shrub Oak – West of Taconic State Parkway and North of Routes 202 & 35)	<b>E</b> Eastchester Middle School 580 White Plains Post Road, Eastchester (enter from Lincoln Avenue)	15	Southwestern Somers, Southern Amawalk (South of Route 35 and West of Wood Street and of Muscoot Farm Park)	<b>E</b> Eastchester Middle School 580 White Plains Post Road, Eastchester (enter from Lincoln Avenue)
2	City of Peekskill (North of Maplewood Ave – area of Peekskill City School District)	<b>B</b> Woodlands High School 475 West Hartsdale, Hartsdale	11	Northeastern Yorktown and Jefferson Valley (area of Lakeland Central School District, East of Taconic State Parkway)	<b>E</b> Eastchester Middle School 580 White Plains Post Road, Eastchester (enter from Lincoln Avenue)	21	Western New Castle and Millwood	<b>D</b> Westchester Community College Gym
3	City of Peekskill (South of Maplewood Ave – area of Peekskill part of Hendrick Hudson Central School District)	<b>A</b> White Plains High School 550 North Street, White Plains		Northeastern Yorktown (Yorktown Heights – area of Yorktown Central School District, East of Taconic State Parkway and North of Routes 35 & 202)	<b>I</b> Fox Lane High School South Bedford Road, Bedford	22	Ossining, Crotonville, Maryknoll (Northern & Eastern Ossining) – More convenient to Route 9A	<b>F</b> Harrison High School 50 Union Avenue, Harrison
4	Verplanck	<b>A</b> White Plains High School 550 North Street, White Plains	12	Southwestern Yorktown and Teatown (West of Taconic State Parkway and South of Routes 35 & 202)	<b>H</b> Port Chester Middle School Bowman Avenue, Rye Brook		Ossining, Sparta (Western & Southern Ossining) - More convenient to US 9	<b>G</b> Ardsley Middle School 700 Ashford Avenue, Ardsley
5	Montrose and Blue Mountain Reservation	<b>A</b> White Plains High School 550 North Street, White Plains	13	Southeastern Yorktown (Yorktown Heights – East of Taconic State Parkway, South of Routes 35 & 202, and North of New Croton Reservoir)	<b>I</b> Fox Lane High School South Bedford Road, Bedford	47	FDR VA Hospital in Montrose	<b>A</b> White Plains High School North Street, White Plains
6	Mount Airy Section, Town of Cortlandt	<b>D</b> Westchester Community College Gym		Southeastern Yorktown (Kitchawan – East of Taconic State Parkway and South of New Croton Reservoir)	<b>H</b> Port Chester Middle School Bowman Avenue, Rye Brook	48	Crugers and Oscawana (Town of Cortlandt)	<b>A</b> White Plains High School 550 North Street, White Plains
7	Village of Croton-on-Hudson (Area of Croton-Harmon Union Free School District)	<b>D</b> Westchester Community College Gym 75 Grasslands Road (Rte. 100), Valhalla	14	Northwestern Somers (Baldwin Place, Granite Springs and Amawalk – North of Route 35 and West of Route 118)	<b>E</b> Eastchester Middle School 580 White Plains Post Road, Eastchester (enter from Lincoln Avenue)	49	Furnace Woods (Town of Cortlandt)	<b>A</b> White Plains High School 550 North Street, White Plains
8	Village of Croton-on-Hudson (North End, area of Hendrick Hudson Central School District)	<b>A</b> White Plains High School 550 North Street, White Plains				50	Quaker Bridge (Town of Cortlandt, South of Croton River and New Croton Reservoir)	<b>D</b> Westchester Community College Gym 75 Grasslands Road (Route100), Valhalla
9	Northwestern Cortlandt (Camp Smith Military Reservation)	<b>C</b> Valhalla Middle School/High School Columbus Avenue, Valhalla				51	Briarcliff Manor - Scarborough (Western Briarcliff Manor) – More convenient to US 9	<b>G</b> Ardsley Middle School 700 Ashford Avenue, Ardsley
	Northwestern Cortlandt (Annsville, Van Cortlandville, Crompond and Continental Village)	<b>C</b> Valhalla Middle School/High School Columbus Avenue, Valhalla					Briarcliff Manor (Northern & Eastern Briarcliff Manor) – More convenient to Route 9A	<b>F</b> Harrison High School 50 Union Avenue, Harrison
	Eastern Cortlandt (Toddville and Quarry Acres)	<b>C</b> Valhalla Middle School/High School Columbus Avenue, Valhalla						



## School Reception Centers

**SCHOOL RECEPTION CENTERS (SRC)** are locations where students would be taken in the event of a school evacuation in an emergency. These are at different locations from General Population Reception Centers.

See back of map for a complete listing of schools, nursery schools, and day care centers and their designated **School Reception Centers**.

**DO NOT GO to School Reception Centers, except to pick up your children!**

1. Ardsley High School  
300 Farm Road  
Ardsley
2. Bruno Pontiero Ridge Street School  
North Ridge St.  
Rye Brook
3. Dobbs Ferry Middle School / High School  
505 Broadway  
Dobbs Ferry
4. Fox Lane High School  
South Bedford Road  
Bedford
5. Fox Lane Middle School  
South Bedford Road (Route 172)  
Bedford
6. Highview Elementary School  
200 North Central Ave.  
Hartsdale
7. Horace Greeley High School  
70 Roaring Brook Road  
Chappaqua
8. John Jay Middle School  
40 North Salem Road  
Route 121-124  
Cross River
9. John Jay Senior High School  
60 North Salem Road  
Route 121-124  
Cross River
10. Lee F. Jackson (Juniper Hill) Elementary School  
Saratoga Road  
Greenburgh
11. Mamaroneck Avenue School  
7 Nostand Ave.  
White Plains
12. Manhattanville College  
2900 Purchase Street  
Purchase
13. Maria Regina High School  
W. Hartsdale Ave.  
Hartsdale
14. Mercy College  
555 Broadway  
Dobbs Ferry
15. North Salem High School / Middle School  
30 June Road, Rt. 124  
North Salem
16. Our Lady of Victory Academy  
565 Broadway  
Dobbs Ferry
17. Pace University – Pleasantville Campus  
Health & Fitness Center  
861 Broadway (Use Entrance 3)  
Pleasantville
18. Pequenakonck Elementary School  
Rt. 124  
North Salem
19. Port Chester Middle School  
Bowman Ave.  
Port Chester
20. Richard J. Bailey Middle School  
33 Hillside Ave.  
Greenburgh
21. Ridgeway School  
225 Ridgeway  
White Plains
22. Solomon Schecter School of Westchester  
30 Dellwood Road  
White Plains
23. St. Patrick's School  
Route 22 and Greenwich Road  
Bedford
24. SUNY Purchase  
Anderson Hill Road  
Purchase
25. Valhalla Middle School / High School  
300 Columbus Ave.  
Valhalla
26. Westchester Community College Student Center  
75 Grasslands Road  
Valhalla
27. White Plains "Highlands" Middle School  
125 Grandview Ave.  
White Plains
28. Woodlands High School  
475 West Hartsdale Ave.  
Hartsdale



Schools

If students and school personnel must be evacuated immediately for their safety, busses will take them to School Reception Centers. The listing below gives you the number of the School Reception Center (SRC) to which students from each school would be taken. Use the front of this map to locate the School Reception Center(s) for your children.

School	School Reception Center
<b>Briarcliff Manor Union Free School District</b>	
Briarcliff High School	17
Briarcliff Middle School	17
Christian Nursery School at Congressional Church Education Center	17
Congregation Sons of Israel Nursery School	17
Congregation Sons of Israel Religious School	17
Creative Playcare	17
Scarborough Presbyterian Children's Center	17
Sleepy Hollow Nursery School	17
St. Theresa's School	17
The Little School	17
Todd Elementary School	17
Young Wonders	17

<b>Chappaqua Central School District</b>	
Westorchard Elementary School	7

<b>Croton-Harmon School District</b>	
Asbury Play and Learn Nursery School	26
Carrie E. Tompkins Elementary School	26
Childrensplace	26
Circle School	26

School	School Reception Center
<i>Croton-Harmon school district continued</i>	
Croton Community Nursery School	26
Croton-Harmon High School	26
Happy Tots Day Care Center	26
Holy Name of Mary Montessori School	26
Pierre Van Cortlandt Middle School	26
Temple Israel of North Westchester	26

<b>Hendrick Hudson School District</b>	
Blue Mountain Middle School	12
Buchanan-Verplanck Elementary School	12
Center Pre-School	12
Croton Montessori	12
Frank G. Lindsey Elementary School	12
Furnace Woods Elementary School	12
Hansel and Gretel Nursery School	12
Hendrick Hudson High School	12
International Pre-School Center	12
Montrose Child Care Center	12
Mount Airy Montessori	12
Mount Airy Nursery School	12
Ohr Hamier Seminary	12
St. Patrick's Pre-Kindergarten	12
Sunset Nursery School	12

<b>Lakeland Central School District</b>	
Benjamin Franklin Elementary School	24
Flying Goose Child Nurturing Space	24
George Washington Elementary School	24
International Pre School #2	24
Kiddie Cottage	24
Lakeland Alternative High School	24
Lakeland Children's Centers #1 thru #6	24

School	School Reception Center
<i>Lakeland school district continued</i>	
Lakeland Cooper Beach Middle School	24
Lakeland High School	24
Lincoln-Titus Elementary School	24
Little Kings and Queens	24
Mohegan Colony Nursery School	24
St. Columbus Elementary School	25
St. Elizabeth Ann Seton School	2
Stephanie's House of Hugs	24
Strawberry Road Early Learning Center	24
Thomas Jefferson Elementary School	24
Tina Langsam	24
Tom Thumb Pre School Center	24
Van Cortlandville Elementary School	24
Walter Panas High School	24

<b>Ossining Union Free School District</b>	
A Kids Place	1
Accent on Learning	16
Anne M. Dornier Middle School	14
Briarcliff Nursery School	16
Brookside Elementary School	14
Claremont Elementary School	1
Country Children's Center at IBM Watson Research Center	5
For Kids' Only, Inc.	16
Nancys Family Day Care	16
Ossining Children's Centers #1 thru #4	1
Ossining High School	3
Park Early Childhood Center	1
Peas & Karrots (St. Ann's)	1
Roosevelt Education Center	1
Small Miracles Pre-School Center	16

School	School Reception Center
<i>Ossining school district continued</i>	
St. Ann's Parochial School	1
St. Augustine's School	14
St. Matthew's Day Care Center	16
Torbank Community Nursery School	16
<b>Peekskill City School District</b>	
Assumption Elementary School	13
Aunt Bessie's Open Door Day Care Center	6
First Hebrew Nursery School	6
Hillcrest Elementary School	20
Oakside Elementary School	6
Park Street School	6
Peekskill High School	28
Peekskill Middle School	20
St. Peter's Headstart Day Care	6
Tutor Time Child Care Learning Center	6
Uriah Hill Elementary School	20
WESTCOP/ Peekskill Head Start/Day Care	6
Woodside Elementary School	10

<b>Putnam/Northern Westchester Board Of Cooperative Educational Services (BOCES)</b>	
Alternative High School - Fox Meadow Center	15
Building Blocks Pre-Kindergarten - Fox Meadow Center	15
Pinesbridge School	15
Walden School	15
Yorktown Heights Center	15

School	School Reception Center
<b>Somers Central School District</b>	
WESTCOP Therapeutic / Headstart	18
Yorktown Christian Academy - Christian Life Academy	
133 Junction Road Brookfield, Connecticut (NOT ON MAP)	
<b>Yorktown Central School District</b>	
Bright Beginnings - Amawalk	9
Bright Beginnings - Granite Springs	9
Bright Beginnings - Yorktown Heights	9
Brookside Elementary School	8
Center Nursery School of the Yorktown	9
Jewish Center	
Crompond Elementary School	8
Field Child Day Care Center	9
French Hill Elementary School	8
Mildred E. Strang Middle School	8
Mohansic Elementary School	8
Our Montessori School in Yorktown - Church of the Nazarene	9
Our Montessori School in Yorktown - St. Andrew's Evangelical Lutheran Church	9
Our Montessori School in Yorktown - Yorktown Jewish Center	9
Our Montessori School in Yorktown - Yorktown United Methodist Church	9
Pied Piper Pre-School	9
Richard G. Rosenthal YM-YWHA	9
St. Patrick's Elementary School	9
The Seed Day Care	9
WESTCOP Yorktown Height Head Start	9
Wiggles & Giggles	9
Yorktown Community Nursery School	9
Yorktown Consortium Enrichment Center (At each Yorktown elementary school)	8
Yorktown High School	9

Westchester County Bus Routes

**Bus Service**  
If you do not have your own transportation to leave the area, you can ride one of the buses provided to take you to a reception center or you may arrange a ride with a neighbor. Following is a list of emergency bus routes and stops in Westchester County. If residents of your planning area are advised to evacuate, locate the nearest bus stop. You will be advised over the radio when to go to your bus stop or wait outside your home if your route has stops at private residences.

Planning Area	BUS STOPS
<b>1 Buchanan</b>	
<b>-W1</b>	<b>Broadway</b> at Bleakley Ave., Rte. 9A; Rte. 9A at Tate Ave., Gallagher St. & Rockledge Ave.
<b>-W2</b>	<b>Westchester Ave.</b> opposite Buchanan/Verplanck Elementary School, & at 4th St., 1st St., & Tate Ave.; <b>Tate Ave.</b> at 1st St., 4th St., opposite Henry St. & at Kings Ferry Rd.
<b>2 Peekskill</b>	
<b>-W5</b>	<b>Washington St.</b> at South St., Hudson Ave., opposite Frost Ave., & at Requa St., Bay St. & Franklin St.
<b>-W6</b>	<b>Depew St.</b> at Franklin St., opposite Bay St., & at Requa St., Hudson Ave., Elm St., & South St.
<b>-W7</b>	<b>Hudson Ave.</b> at Halsead St., Pomeroy St., Pine St., Wells St., Walnut St., Fremont St. & Union Ave.
<b>-W8</b>	<b>Elm St.</b> at Wells St., Fremont St. & Union Ave.; <b>Union Ave.</b> at 2nd St., 1st St. & South St.
<b>-W9</b>	<b>Beverly La.</b> at Maple Ave.; <b>Maple Ave.</b> opposite Ferris St., at Hudson Ave., Elm St., Riverview Ave., opposite Nassau St. & at Pine St.
<b>-W10</b>	<b>South Division St.</b> at Rte. 35/202; Rte. 35/202 at Arch St., opposite Armstrong Ave. & Finch St., at Cayuga Dr., Private Residences & South entrance of Beach Shopping Ctr.
<b>-W11</b>	<b>Rte. 6/Main St.</b> at No. James St., Broad St., Field St., Charles St., Southard Ave., & Rev. Franklin Wiggins Plaza, opposite Hamilton Ave. & Husted Ave., at Mallard Way entry, Beach Shopping Ctr., Conklin Ave. & Parkway Dr.
<b>-W12</b>	<b>Constant Ave.</b> at High St., Kissam Rd., & James St.; <b>James St.</b> at Constant Ave.
<b>-W13</b>	<b>Frost La.</b> at Vail Ave., Carhart Ave., Lindenberg Pl. & Oakwood Dr.
<b>-W14</b>	<b>No. Division St.</b> at Parkway Pl. & Lockwood Dr.; <b>Lockwood Dr.</b> opposite King St., Albert Rd., Bernard Rd., Lyman Ave. & at Highland Ave.
<b>-W15</b>	<b>Nelson Ave.</b> at John St., Paulding St., Orchard St. & Constant Ave.; <b>Constant Ave.</b> at Highland Ave.; <b>Highland Ave.</b> at Phoenix Ave., opposite Liberty St. & Reynolds St., & at Garfield Ave. & Pemart Ave.
<b>-W16</b>	<b>Division St.</b> at Howard St., Cortlandt St., Orchard St., Constant Ave., opposite Phoenix Ave., Warren Ave. & Pemart Ave. & at Right Ct.
<b>-W17</b>	<b>Rte. 6/Main St.</b> at Division St., Nelson Ave., Decatur St., Hadden St., Spring St. & Peekskill Inn
<b>-W18</b>	<b>Lower South St.</b> at Welcher Ave., Louisa St. & Franklin Ave., opposite Old Bay St. & at Requa St. & Hudson Ave.
<b>-W19</b>	<b>Washington St.</b> at Maplewood Ave., opposite Shenandoah Ave. & Hoover Ave., & at Sherman Ave. & Welcher Ave.; <b>Welcher Ave.</b> at McKinley St. & Patricia Apartments

<b>3 Verplanck</b>	
<b>-W3</b>	<b>Broadway</b> opposite 16th St., 14th St., 11th St., 8th St., & 6th St.
<b>-W4</b>	<b>Westchester Ave.</b> at 14th St., 8th St., & 6th St.
<b>4 Montrose &amp; Blue Mountain</b>	
<b>-W21</b>	<b>Kings Ferry Rd.</b> at Coachlight Sq. Condominiums, Glenwood Dr., Montrose Point Rd., Hunt Ave. & Rt. 9A
<b>-W22</b>	<b>Sunset Rd.</b> at Kings Ferry Rd., opposite North St., at Montrose Point Rd., opposite Meadows Rd. & Tommy Thurber Lane & at Dutch St.; <b>Dutch St.</b> at Crugers Rd. & Private Residences
<b>-W24</b>	<b>Washington St.</b> at Boulder Dr. & Montrose Station Rd.; <b>Montrose Station Rd.</b> at Travis Lane; Rte. 9A (south) at Lancaster Ave., opposite Victoria Ave., & at Trinity Ave. & Crugers Station Rd.

<b>5 Mount Airy</b>	
<b>-W98</b>	<b>Rte. 129 (Yorktown Rd.)</b> & Short Hill Rd.; <b>Mt. Airy Rd.</b> East at Colabaugh Pond Rd., opposite Joseph Wallace Dr., at Windsor Rd., McGuire La., & Hale Hollow Rd.; <b>Colabaugh Pond Rd.</b> at Woodale Rd. & Private Residences to Mt. Airy Rd. East

<b>6 Croton-on-Hudson</b>	
<b>-W30</b>	<b>Rte. 129 (Grand St.)</b> at Dalley Dr., Batten Rd. & Wood Rd.; <b>Cleveland Dr.</b> at Gerstein St., Loconto St., Peter Beet La. & Old Post Rd.; <b>Old Post Rd.</b> at Sunset Dr. & Morningside Dr.; <b>Morningside Dr.</b> at Lexington Dr.
<b>-W31</b>	<b>Radnor Rd.</b> at Melrose Dr., Irving Ave., Emerson Ave., Thompson Ave. & Elm Ave.
<b>-W32</b>	<b>Old Post Rd.</b> South opposite Prospect St. & Cleveland Dr.; <b>Cleveland Dr.</b> at Emerson Ave., Olcott Ave., & Benedict Blvd.; <b>Benedict Blvd.</b> at Young Ave. & South Riverside Ave.; <b>Croton Point Ave.</b> at ramp to Rte. 9 South.
<b>-W33</b>	<b>Rte. 9A</b> at Warren Rd., Skyview Nursing Home & Wolf Rd. (both inter sections); <b>North Riverside Ave.</b> opposite Brook St. & at Municipal Pl.
<b>-W34</b>	<b>Stevenson Pl.</b> at Old Post Rd.; <b>Old Post Rd.</b> at Prospect Pl., Lounsbury Rd., Brook St., Grand St. & Holy Name of Mary School; <b>Maple street</b> at Wells Ave. & So. Riverside Ave.; <b>So. Riverside Dr.</b> opposite Onida Ave.
<b>-W35</b>	<b>Mt. Airy Rd.</b> South at Glengary Rd., opposite Riverview Trail & King Street & at Grand St.

Planning Area	BUS STOPS
<b>8 Annsville, Van Cortlandtville, Crompond &amp; Continental Village</b>	
<b>-W36</b>	<b>Gallows Hill Rd.</b> opposite Hillcrest Ave., at Kingston Ave. & Dogwood Rd.; <b>Dogwood Rd.</b> at Pumphouse Rd., opposite Crescent Hill Dr., Brook St. & at Albany Post Rd.
<b>-W37</b>	<b>Sprout Brook Rd.</b> at Schuyler La., Strang La., Sprout Brook Park, Sprout Brook Field & Albany Post Rd.
<b>-W38</b>	<b>Route 9 North</b> at Annsville Circle, opposite Private Residences, Jean Dr., Jack Rd. & So. Mountain Pass Rd.
<b>-W39</b>	<b>Lexington Ave.</b> at Rte. 6 & Baker St., opposite Cortlandt Town Center, at Renee Gate & Westbrook Dr., opposite Jerome Dr. & at Locust Ave.
<b>-W40</b>	<b>Westbrook Dr.</b> at Cynthia Rd. & Fawn Ridge Rd.; <b>Fawn Ridge Rd.</b> at Birch La.; <b>Red Mill Rd.</b> at South Hill Rd., Mill Ct., & MacArthur Blvd.; <b>MacArthur Blvd.</b> at Lockwood Rd.
<b>-W41</b>	<b>Locust Ave.</b> at Frederick St.; <b>Frederick St.</b> opposite Allan St.; <b>Dale Ave.</b> opposite Linda Pl.; <b>Richmond Pl.</b> at Aqueduct Pl.
<b>-W42</b>	<b>Terrace Pl.</b> at Alpine Dr.; <b>Varian Rd.</b> at Oregon Rd.; <b>Oregon Rd.</b> at Root La., Skylark Dr., Westbrook Dr., School St., Young St. & Old Oregon Rd.
<b>-W43</b>	<b>Oregon Rd.</b> at Catherine Street, Gilbert St., & Pumphouse Rd., opposite Gallows Hill Rd., at Locust Ave., opposite Durrin Ave. & Adams Ruch St. & at Knollwood Rd.
<b>-W44</b>	<b>Gilbert St.</b> at Revolutionary Rd.; <b>Eton La.</b> at Fox Hill Rd.; <b>The Oval</b> at Waterbury Parkway; <b>Waterbury Parkway</b> at Ridge Rd.; <b>Fairview Place</b> at Gabriel Dr.; <b>Gabriel Dr.</b> at Locust Ave.
<b>-W45</b>	<b>Locust Ave.</b> opposite Broadie St., Rancho Dr. & Oregon Rd.; <b>Lexington Ave.</b> opposite Morris Lane, at Dyckman Dr., Private Residences & Crompond Rd.;
<b>-W45</b>	<b>Crompond Rd.</b> at Baron De Hirsch Rd. & Maple Row
<b>-W45</b>	<b>Maple Row</b> at Paulding La.; <b>Paulding La.</b> opposite Pine Rd. & at Townsend Rd.; <b>Townsend Rd.</b> at Baron De Hirsch Rd. & Briar La.
<b>-W52</b>	<b>Lexington Ave.</b> at Dares Ln., opposite Lakeland Ave. & Lawrence Rd., at Crawford Rd. & Decatur Rd., opposite High St. & at Rte. 6

<b>9 Toddville &amp; Quarry Acres</b>	
<b>-W29</b>	<b>Croton Ave.</b> at South Gate Estates, opposite Mtn. View Rd., at Maple Ave., Baptist Church Rd. & on demand to Rte. 129
<b>-W47</b>	<b>Furnace Dock Rd.</b> at Gilman La. (Harmony Hill) & Croton Ave.; <b>Croton Ave.</b> opposite Lynwood Rd., & at Croton Park Rd. & Crompond Rd. (Rte. 202)
<b>-W48</b>	<b>Lafayette Ave.</b> at Lyncrest Rd. & Ridge Rd.; Rte. 202/35 opposite Conklin Ave. & at Northridge Rd., Clinton Ave., Crestview Ave., Forest Rd. & Rick La.

<b>10 Mohegan Lake &amp; Shrub Oak</b>	
<b>-W49</b>	<b>Rte. 6</b> at Barger St., Sunnyside St., Mountain Brook Rd., Mill St. & Strawberry Rd.; <b>Strawberry Rd.</b> at Briarhill St., Eleanor Dr., Foothill St. & Lexington Ave.; <b>Lexington Ave.</b> opposite West Rd.
<b>-W50</b>	<b>Rte. 6</b> at Mohegan Ave.; <b>Mohegan Ave.</b> at Sagamore Ave.; <b>Sagamore Ave.</b> at Delaware Rd. & Narragansett Rd.; <b>E. Main St.</b> at New Rd. (west intersection), Stony St., New Rd. (east intersection), James St. & Barger St.
<b>-W51</b>	<b>Stony St.</b> at Winding Court & Quarry Dr., opposite Judy Rd., & at Ivy Rd. & Glen Rd.
<b>-W52</b>	<b>Lexington Ave.</b> at Dares Ln., opposite Lakeland Ave. & Lawrence Rd., at Crawford Rd. & Decatur Rd., opposite High St. & at Rte. 6
<b>-W53</b>	<b>Lexington Ave.</b> at Amazon Rd.; <b>Amazon Rd.</b> at High St., Mogul Dr., Sylvan Rd. & Dale St.; <b>Dale St.</b> at Winonah Trail; <b>Mohegan Ave.</b> at Christine Rd. & Kimble Ave.

<b>11 Northeastern Yorktown Jefferson Valley</b>	
<b>-W54</b>	<b>E. Main St.</b> (Jefferson Valley) at Indian Hill Rd., Lee Blvd., & Hill Blvd., opposite Perry St. & at Gomer Court
<b>-W55</b>	<b>Lee Blvd.</b> at Strang Blvd., opposite Hill Blvd. & at Quinlan St.; <b>Quinlan St.</b> at London Rd., Radcliffe Dr., Louella Rd., Ogden Dr. & Granite Springs Rd.
<b>-W56</b>	<b>Gomer St.</b> at Curry St., on demand between Curry St. & Lewis Ave., at Lewis Ave., opposite Andrea Rd., Somerset Rd. & Cordial Rd., at London Rd., opposite Homestead Rd., & at Mariet Rd. & Granite Springs Rd.
<b>-W57</b>	<b>Curry St.</b> opposite Jennifer Ct., Timberlane Ct. & Dunwoodie Ct., at Weskora Rd., Somerset Rd. & Ravencrest Rd.; <b>Ravencrest Rd.</b> at Poplar St.; <b>Whitman Rd.</b> at Muir Ct.; <b>Douglas Rd.</b> at Whittier Ct. & Emerson Ct.; <b>Curry St.</b> at Royce Ct.
<b>-W58</b>	<b>Rte. 132</b> opposite Wildwood St., at Overlook Ave., opposite Kessler Pl., Suncrest Ave. & Oakside Rd., & at Beaver Dr., Salem Rd., Barbary Rd., Holly Dr. & Fox Meadow Rd.
<b>-W59</b>	<b>Fox Meadow Rd.</b> at Larkspur St.; <b>Larkspur St.</b> at Barbary Rd.; <b>Barbary Rd.</b> at Strang Blvd.; <b>Strang Blvd.</b> at Fox Meadow Ct. & Rte. 202/35; Rte. 202/35 opposite Darnley Pl., Loretta St. & Old Yorktown Rd.
<b>-W60</b>	<b>Rte. 202/35</b> opposite Yorktown Police Station, at Hawthorne Dr., York Hill Rd. & Elizabeth Rd.; <b>Granite Springs Rd.</b> at Old Granite Springs Rd., Colonial St., Dunning Dr., Gregory St., Broad St., Sarles Dr. & Sunrise St.; <b>Quaker Church Rd.</b> at Oslo Dr. & Loder Rd.
<b>-W60</b>	<b>Ridge St.</b> at Waverly Rd., Elizabeth Rd., Sultana Dr., Van Cortlandt Circle & Rte. 202/35; Rte. 202/35 at Broad St.; <b>Broad St.</b> at Whipporwill Rd. & Loder Rd.; <b>Loder Rd.</b> at Evergreen St.; <b>Evergreen St.</b> opposite Blue Spruce Dr.

Planning Area	BUS STOPS
<b>12 Southwestern Yorktown &amp; Teatown</b>	
<b>-W62</b>	<b>Hunter Brook Rd.</b> at Jacobs Rd., opposite White Hill Rd., at Private Residences, Baptist Church Rd., Private Residences, Wilson Rd. & Rte. 129; Rte. 129 opposite Tompkins Garage, Hayes Dr. & at Underhill Ave.; <b>Baldwin Rd.</b> at Underhill Ave. & Baptist Church Rd.
<b>-W63</b>	<b>Old Crompond Rd.</b> at Catherine St., Field St., Hunter Brook Rd., Mill Pond Rd. & Pine Grove Ct.; <b>Pine Grove Ct.</b> at Bunney La.; <b>Mark Rd.</b> at Bunney La., Ecdris Rd. & White Hill Rd.; <b>White Hill Rd.</b> at Mohansic Ave.; <b>Mohansic Ave.</b> opposite Leland Dr. & Ecdris Rd. & at Rte. 202/35
<b>-W64</b>	<b>Journeys End Rd.</b> at Blinn Rd.; <b>Blinn Rd.</b> at Spring Valley Rd.; <b>Grants La.</b> at Spring Valley Rd. & Illington Rd.
<b>13 Southeastern Yorktown &amp; Kitchawan</b>	
<b>-W65</b>	<b>Rte. 134</b> at IBM Driveway, Chadeayne Rd. & opposite Old Kitchawan Rd. North; <b>Pines Bridge Rd.</b> at Rte. 134, Chadeayne Rd. & opposite Shingle House Rd.
<b>-W66</b>	<b>Rte. 100</b> opposite Travelers Rest., on demand & at Seven Bridges Rd.; <b>Crow Hill Rd.</b> at Lake Rd., Crow Hill Path & Private Residences.
<b>-W67</b>	<b>Hanover Rd.</b> at California Rd., Croton Heights Rd., opposite Butler Ct. & Birdsall Dr. & at Rte. 118
<b>-W68</b>	<b>Rte. 129</b> at Rte. 118; Rte. 118 at Sanctuary Country Club & Croton Heights Rd.; <b>Spring Dr.</b> at McKeel St.; <b>McKeel St.</b> at Revere Dr.; <b>Revere Dr.</b> at Rte. 118; <b>Underhill Ave.</b> at Heights Dr., Overhill Ave., Rochambeau Dr. & Rte. 118; Rte. 118 at Allan Ave./Kear St. & Downing Dr.
<b>-W70</b>	<b>Mohansic Ave.</b> at Baldwin Rd.; <b>Baldwin Rd.</b> at Dogwood Dr., Mohansic Ave., Giordano Ave., Allan Ave. & Rte. 202/35; Rte. 202/35/118 at Brookside Ave. & Greenwood St.
<b>-W71</b>	<b>Greenwood St.</b> at Veterans Rd.; <b>Veterans Rd.</b> at Commerce St.; <b>Hanover St.</b> at Railroad Ave., Underhill Ave., Church Pl., Moseman Rd., Hudson Rd. & Montross Rd.
<b>-W72</b>	<b>Underhill Ave.</b> at Front St. & Summit St.; <b>Summit St.</b> at Richard Pl., Moseman Rd., Hudson Rd.; <b>Montross Rd.</b> at Summit St.

<b>14 Granite Springs &amp; Amawalk</b>	
<b>-W73</b>	<b>Rte. 6</b> at Windsor Rd., Mahopac Ave. & Baldwin Pl.
<b>-W74</b>	<b>Mahopac Ave.</b> opposite Amawalk Post Office, at Amawalk Ave., Lakeview Terr. & Woodcrest Terr., opposite Arden Dr., at Elisha Purdy Rd., Water Gate Rd., Stonewall Dr., Private Residences to Rte. 6; Rte. 6 at Baldwin Pl.
<b>-W75</b>	<b>Granite Springs Rd.</b> at Hilltop Rd., Stuart's Fruit Farm, Mahopac Ave. & Richard Somers Rd. West, opposite Bonnie Brae Ave. & at Richard Somers Rd. East
<b>-W76</b>	<b>Rte. 35</b> opposite Wood St. & at Lake Rd.; Rte. 118 at Private Residences, Meadow Park Estates, opposite Granite Springs Rd., at Lincolnale Rd., Mahawk La., Greentree Rd. North & Meadow Park Rd.
<b>15 Southwestern Somers</b>	
<b>-W77</b>	<b>Bedell Rd.</b> at Pines Bridge Rd., Greenlawn Rd., opposite Elizabeth Court & at Mekeel St.
<b>-W78</b>	<b>Mekeel St.</b> at Wood St.; <b>Moseman Ave.</b> at Mekeel St., opposite Orchard Rd., at Sun Hill Dr., Pines Bridge Rd., South La., Wood St., Stuart La. & Rte. 100; Rte. 100 on demand to Rt. 35

<b>21 Western New Castle &amp; Millwood</b>	
<b>-W100</b>	<b>Croton Dam Rd.</b> at Grace La. & Allapartus Rd.; <b>Spring Valley Rd.</b> at Glendale Rd.; <b>Glendale Rd.</b> opposite Dawning La. & at Quaker Ridge Rd.
<b>-W101</b>	<b>Rte. 100</b> at Hidden Hollow Rd., Glenwood Rd., Pamela Pl., opposite Sand St., at Rte. 120 (Shingleshouse Rd.), Rte. 133 (1st intersection), Inningwood Rd., Rte. 133 (2nd intersection), & North State Rd.
<b>-W102</b>	<b>Rte. 133</b> at Seven Bridges Rd., Hog Hill Rd., Whitlaw La., Joan Dr., Quaker La. & Quaker St. (Rte. 120); <b>Hardscrabble Rd.</b> at Hilltop Rd., Campfire Rd., Deepwood Dr. & Douglas Rd.
<b>-W103</b>	<b>Shingleshouse Rd.</b> at Gregory La. & Pines Bridge Rd.; <b>Pines Bridge Rd.</b> at Lakeview Rd., Ichabod Rd., Hoag Cross Rd., Highway Rd. & Inningwood Rd.; <b>Inningwood Rd.</b> at Vails La.

<b>22 Ossining</b>	
<b>-W104</b>	<b>No. State Rd.</b> opposite Club Fit & at Ryder Ave. & Blue Lantern Rd.
<b>-W107</b>	<b>Chappaqua Rd.</b> at Tappan Terr. & Morningside Dr.; <b>Morningside Dr.</b> at Nord Circle, Ridgeview Dr. & Ryder Ave.; <b>Ryder Ave.</b> at Gordon Ave.; <b>Gordon Ave.</b> at Blue Lantern Rd.; <b>Chappaqua Rd.</b> at Rte. 100
<b>-W111</b>	<b>Croton Ave.</b> at Brookville Rd. & Ramapo Rd.; <b>Campwoods Rd.</b> at Belle Ave. & Narragansett Rd.; <b>Ryder Rd.</b> at Park Dr., opposite Sunset Dr. (2 <sup>nd</sup> intersection) & at Brookside La.; <b>Brookside La.</b> at Somersetown Rd. (Rte. 133); <b>Somersdown Rd.</b> (Rte. 133) at Cooper Dr.; <b>Cooper Dr.</b> at Lakeville Dr.; <b>Lakeville Dr.</b> at Ganung Dr.; <b>Ganung Dr.</b> at Sletator Dr., Ganung Dr. & Decker Rd.; <b>Donald La.</b> at Decker Rd.; Rte. 133 at Rte. 9A (southbound ramp)
<b>-W113</b>	<b>Underhill Rd.</b> at Noel Dr., Farm Rd., Elridge Ave. & Pleasantville Rd.; <b>Pleasantville Rd.</b> at Susquehanna Rd., Osage Dr. West, Hickory Rd., Mulberry Rd., Central Dr., No. State Rd., opposite Briarcliff Post Office, & at So. State Rd. & Rtes. 100/9A.

Planning Area	BUS STOPS
<b>22 Ossining</b>	
<b>-W114</b>	<b>Maurice Ave.</b> at Wolden Rd.; <b>Wolden Rd.</b> at Emwilton Pl. & Ellis Pl.; <b>Linden Ave.</b> at Eastern Ave., Clinton Ave. & Croton Ave.; <b>Croton Ave.</b> at Bellevue Ave. & Watson Ave.; <b>Sherman Pl.</b> at Croton Ave. & Park Ave.; <b>Park Ave.</b> at Ward Pl., Pine Ave., opposite First Ave. & at Narragansett Ave.; <b>Narragansett Ave.</b> opposite Perishing Ave. & at Bayden Rd.
<b>-W115</b>	<b>Croton Ave.</b> at Elizabeth St. & Clinton Ave.; <b>Dale Ave.</b> at Garden St., Marble Pl. & Pine Ave.; <b>Croton Dam Rd.</b> at Pershing Ave., Stony Lodge Hospital, Grandview Ave., Feeney Rd., & Minkel Rd.; <b>Minkel Rd.</b> at Redway Rd. & Bracken Rd.; <b>Bracken Rd.</b> at Minkel Rd.; Rte. 134 at The Woods Condominium Development
<b>-W116</b>	<b>Van Cortlandt Ave.</b> at Claremont Ave. & Cortlandt Pl.; <b>Ogden Rd.</b> at Briarcliff Woods (1 <sup>st</sup> entrance) & Cedar La.; <b>Cedar La.</b> at White Birch La.; <b>White Birch La.</b> at Incognito La.; <b>Locust Rd.</b> at Reeback Dr.; <b>Reeback Dr.</b> at Stormytown Rd.; <b>Stormytown Rd.</b> at Knollwood Dr. & Cedar La.; <b>Cedar La.</b> at Westview Ave. & opposite Guatlire La.
<b>-W117</b>	<b>Rte. 9</b> at Charter Circle; <b>Charter Circle</b> at Geneva Rd.; Rte. 9 at Rockledge Ave., on demand to Revolutionary Rd., River Rd., & Country Club La.
<b>-W118</b>	<b>Spring St.</b> at Bus Station; Rte. 9 at Maple Pl., Walker St., Broad Ave., William St., Everett Ave., Washington Ave. & Acker Ave.; <b>Revolutionary Rd.</b> at Agate Rd., Rockledge Ave., Kemeys Ave., Scarborough Circle & Rte. 9
<b>-W119</b>	<b>Spring St.</b> at Academy Pl., Broad Ave., James St., William St., Everett Ave., Lafayette St. & Agate Ave.; <b>Rockledge Ave.</b> at Scarborough Manor Condominiums.
<b>-W120</b>	<b>So. Water St.</b> at Secor Rd.; <b>Water St.</b> at Main St., Central Ave. & Broadway; <b>Broadway</b> at North Malcolm St.; <b>North Malcolm St.</b> at Malcolm St. & Sarah St.
<b>-W121</b>	<b>Old Albany Post Rd.</b> at Ogden Rd.; Rte. 9 opposite Piping Rock Dr., Audubon Dr., Westview Dr., & Yates Ave., at Snowden Ave., Montgomery St., Aqueduct St. & Main St.
<b>-W122</b>	<b>Quaker Bridge Rd.</b> opposite Riverview Farm Rd., at Old Albany Post Rd. & opposite Fowler Ave.

||
||
||