

TOWN OF CORTLANDT

DEPT. OF TECHNICAL SERVICES



NYS DOT PIN 8103.50
ROUTE 9A SIDEWALK
KINGSFERRY ROAD TO
ROUNDTREE LANE

PROJECT BACKGROUND

- ▣ INITIAL FUNDING WAS OBTAINED VIA SAFETEA-LU HIGH PRIORITY PROJECT GRANT PROGRAM IN JULY 2007.
- ▣ TOTAL ALLOCATION OF THE GRANT PROVIDES \$330,000 OF WHICH 80% IS FUNDED FEDERALLY WITH AN 20% MATCH BY THE TOWN.
- ▣ THE PROJECT IS DESIGNATED AS A LOCALLY ADMINISTERED FEDERAL AID PROJECT OVERSEEN BY NYSDOT REGION 8's LOCAL PROJECT UNIT.

PROJECT LOCATION

- ▣ WEST SIDE OF ROUTE 9A / ALBANY POST ROAD BEGINNING SOUTH OF KINGS FERRY ROAD RUNNING NORTH TO ROUNDTREE LANE.
- ▣ PROPOSED SIDEWALK WILL RUN A TOTAL LENGTH OF APPROXIMATELY 1500 LINEAR FEET.

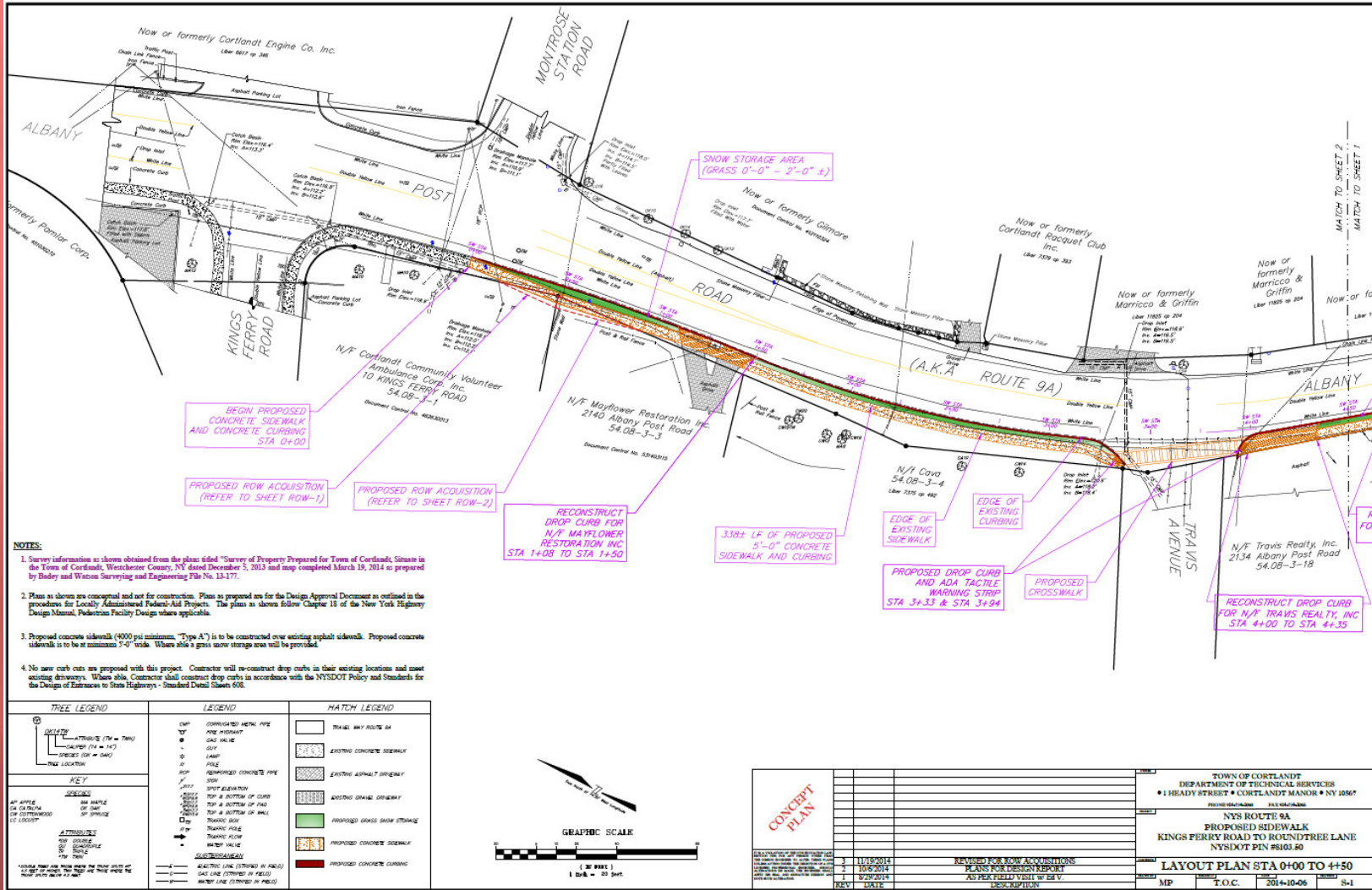
PROJECT LOCATION cont'd



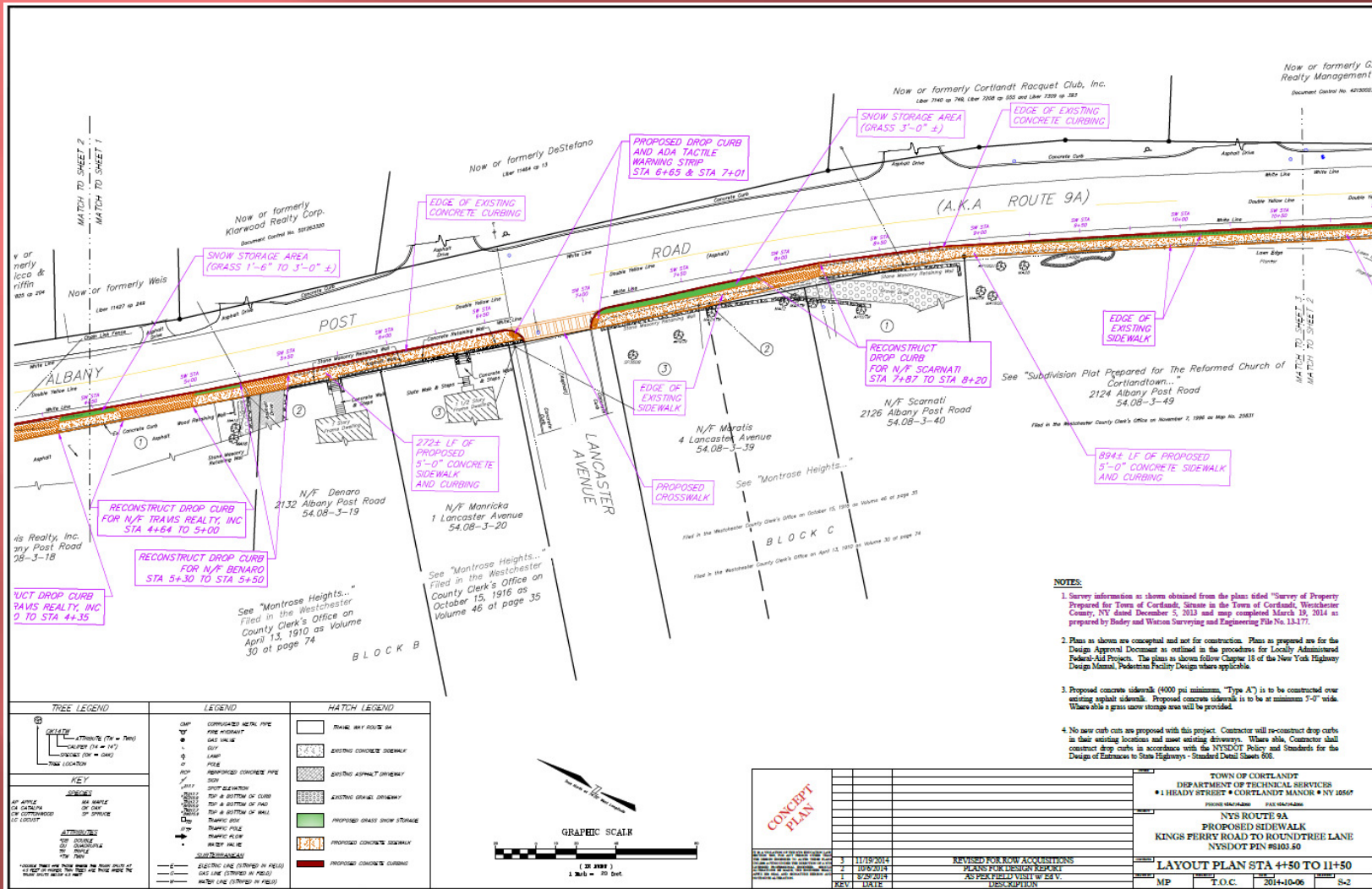
PROJECT OBJECTIVES

- ▣ IMPROVE PEDESTRIAN CONNECTIVITY IN THE HAMLET OF MONTROSE BY.....
 - CONSTRUCTING A UNIFORM 5-FT WIDE CONCRETE SIDEWALK MEETING ADA ACCESSIBILITY GUIDELINES.
 - DEFINING THE EDGE OF SIDEWALK WITH CONCRETE CURBS.
 - CREATING A CONTINUOUS SIDEWALK FREE OF OBSTRUCTIONS.

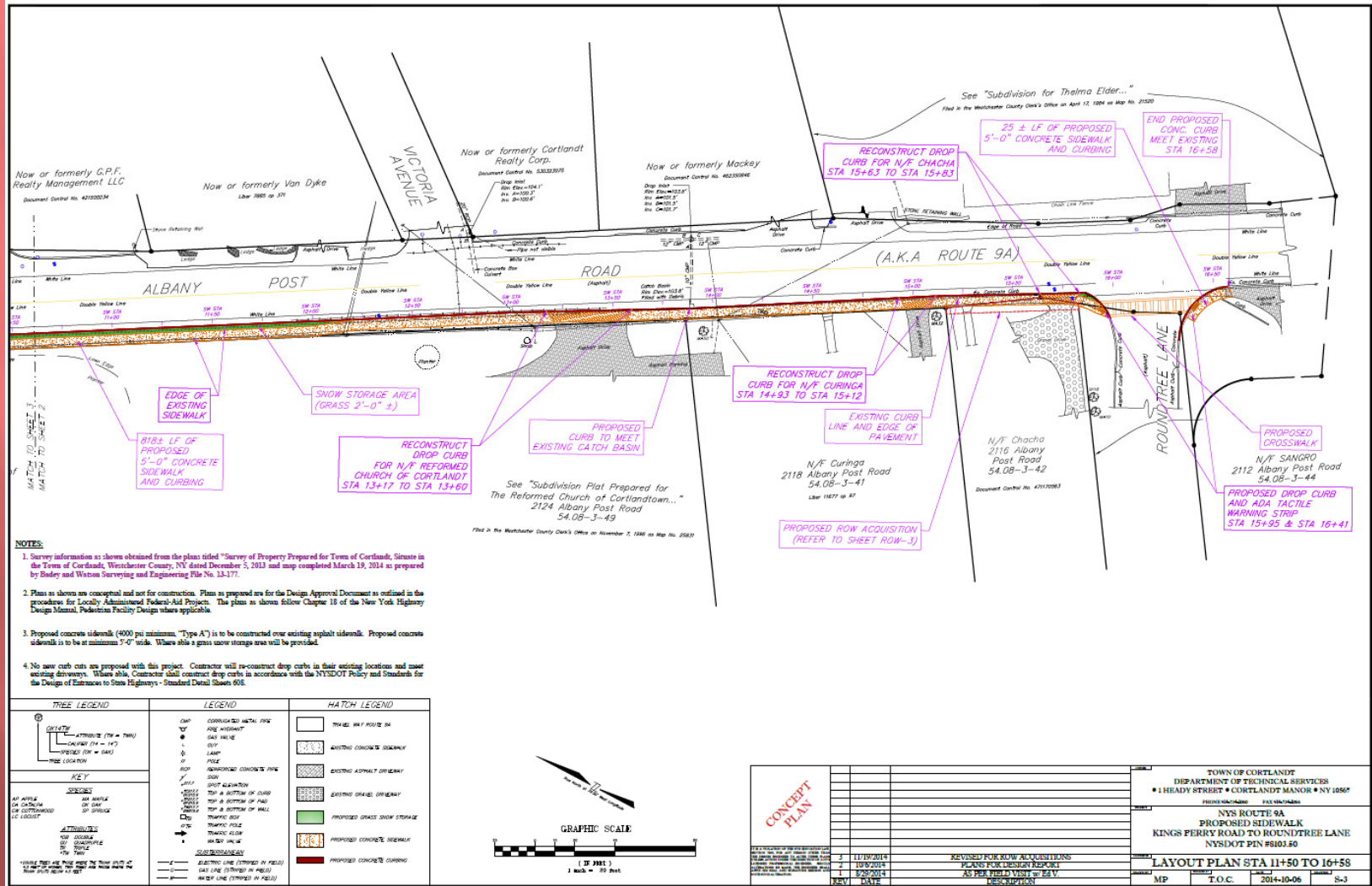
CONCEPT PLAN SHEET 1



CONCEPT PLAN SHEET 2



CONCEPT PLAN SHEET 3



12/9/2014

DEPT. OF TECHNICAL SERVICES

8

PROJECT HIGHLIGHTS

- ▣ 1500 LINEAR FEET OF NEW 5-FT WIDE CONCRETE SIDEWALK AND CURBING.
- ▣ ADA COMPLIANT DROP CURBS AT ALL INTERSECTIONS.
- ▣ PAINTED CROSSWALKS ALONG TRAVIS AVENUE, LANCASTER AVENUE AND ROUNDTREE LANE.

NEXT STEPS

- ▣ SUBMIT THE DRAFT DESIGN REPORT TO THE NYSDOT REGION 8's LOCAL PROJECTS UNIT FOR REVIEW AND APPROVAL.
- ▣ OBTAIN A NYSDOT HIGHWAY WORK PERMIT.
- ▣ COMPLETE BID SPECIFICATIONS AND CONTRACT DRAWINGS FOR FORMAL BID.

QUESTIONS / COMMENTS