

TOWN OF CORTLANDT  
DOWNTOWN REVITALIZATION INITIATIVE (DRI)  
AUGUST 25, 2022



# WHAT IS THE DOWNTOWN REVITALIZATION INITIATIVE (DRI) ?

A cornerstone of the State's economic development program, the DRI program is in its fifth year and will invest \$200 million in up to 20 downtowns statewide. Communities will be selected by the state's ten Regional Economic Development Councils (REDCs) based on the downtown's potential for transformation. Within each region, the REDC will nominate either two downtowns to receive \$10 million each or one downtown to receive an award of \$20 million to develop a downtown strategic investment plan and implement key catalytic projects that advance the community's vision for revitalization.



# DRI OBJECTIVES

- Transform downtown neighborhoods into vibrant centers with a high quality of life
- Create downtown areas that are magnets for redevelopment, business, job creation, and economic and housing diversity.
- Create compact, walkable downtowns
- Help New York State rebuild its economy from the effects of the COVID-19 pandemic
- Achieve the State's bold climate goals by promoting the use of public transit and reducing dependence on private vehicles.



## Benefits of Mixed-Use Development

Increased Economic Vitality

Lower Infrastructure Costs

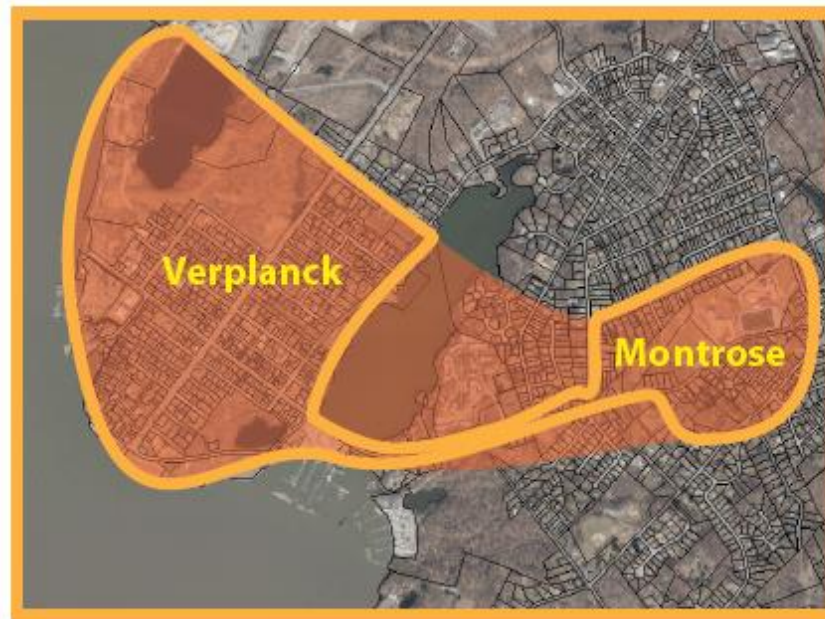
Increased Tax Revenue

Budget Cost Savings



# DRI BOUNDARY

## Town of Cortlandt



# PREVIOUS DRI MID-HUDSON REGION WINNERS

- City of Peekskill
- Village of Ossining
- City of New Rochelle
- Village of Haverstraw
- City of Middletown
- City of Kingston
- City of Middletown



POTENTIAL DRI PROJECTS

# MIXED-USE ANCHOR BUILDING MONTROSE CENTER

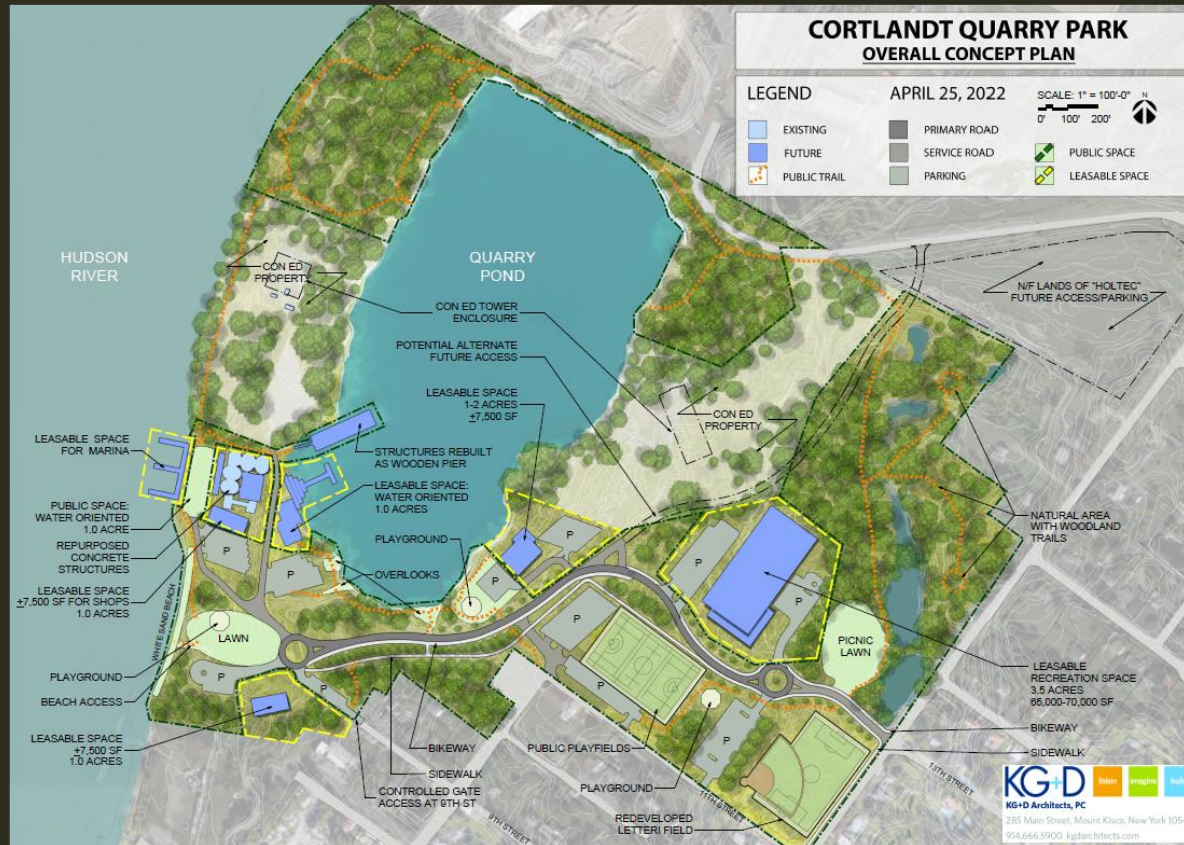


KG+D Architects, PC  
285 Main Street, Mount Kisco, New York 10549  
914.666.5900 kgdarchitects.com

MONTROSE HAMLET PLANNING – View of ANCHOR BUILDING

**Project:** Construct a mixed-use anchor building in the center of Montrose.

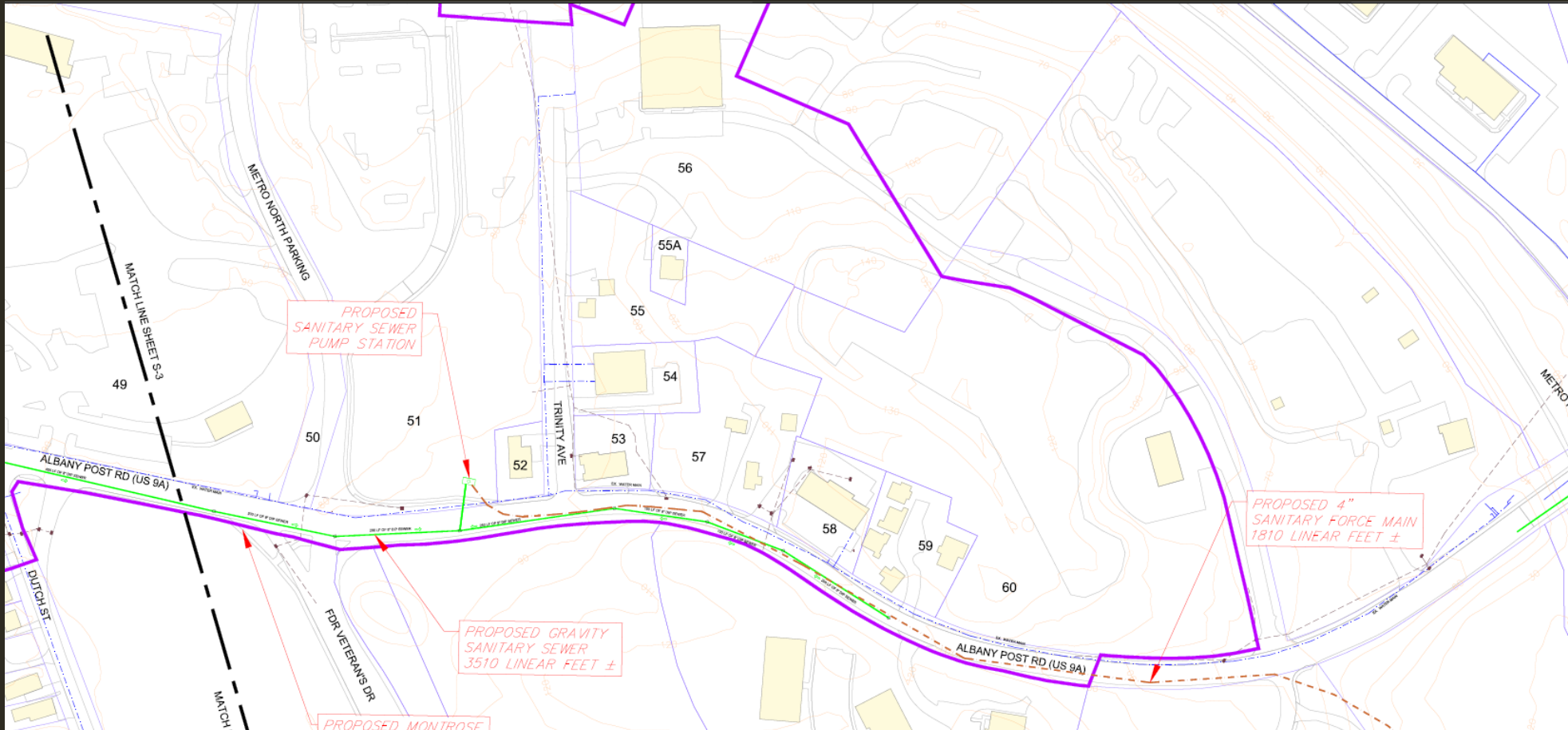
# QUARRY PARK IMPROVEMENTS



**Project:** Construct improvements to Cortlandt Quarry Park including park amenities and pad sites for leasable private recreation areas such as marinas, restaurants, and indoor sports facilities



# SEWER INFRASTRUCTURE IMPROVEMENTS



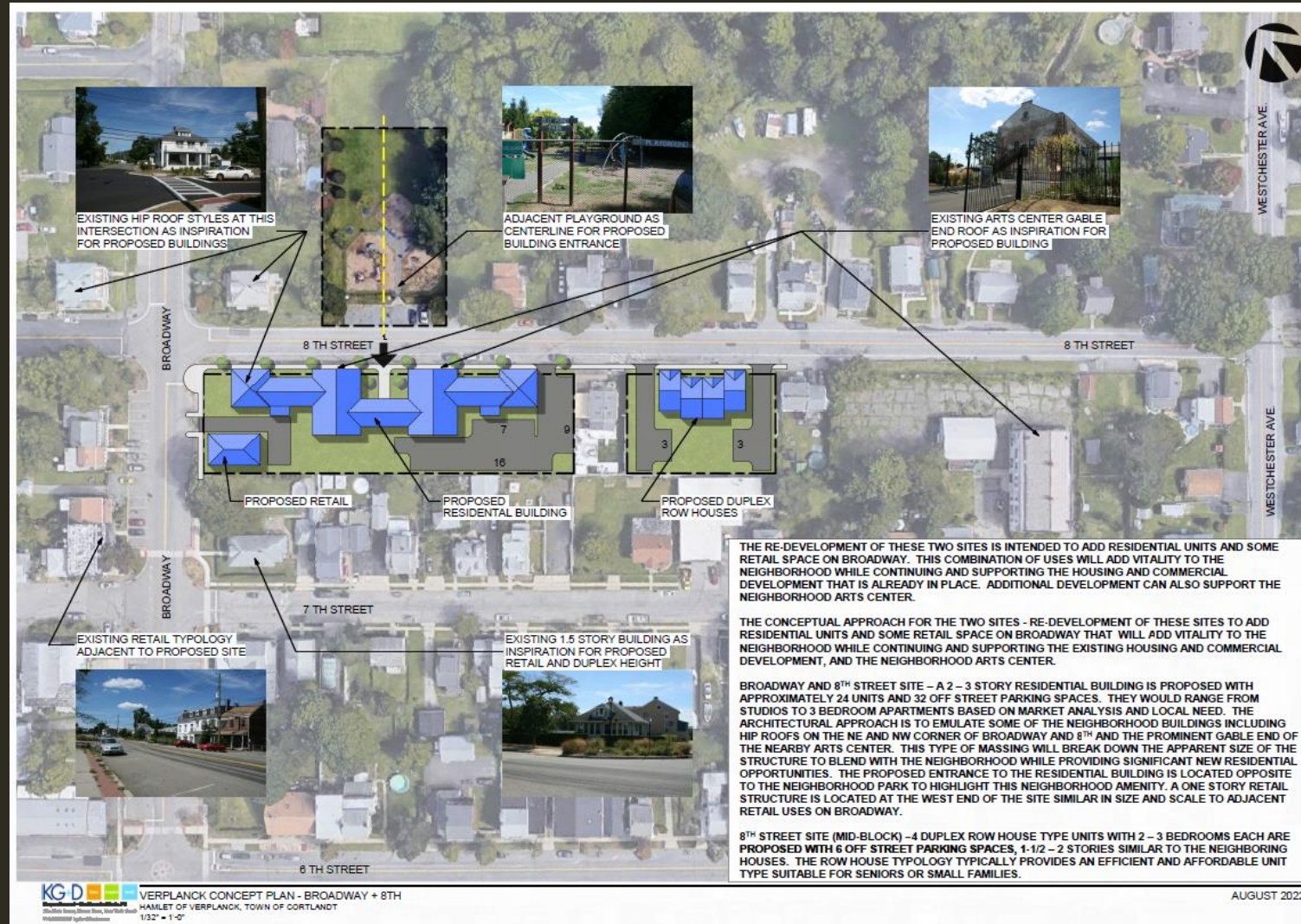
Project: Install and improve sewer infrastructure to service the Montrose and Verplanck Hamlets

# MIXED-USE INFILL DEVELOPMENT

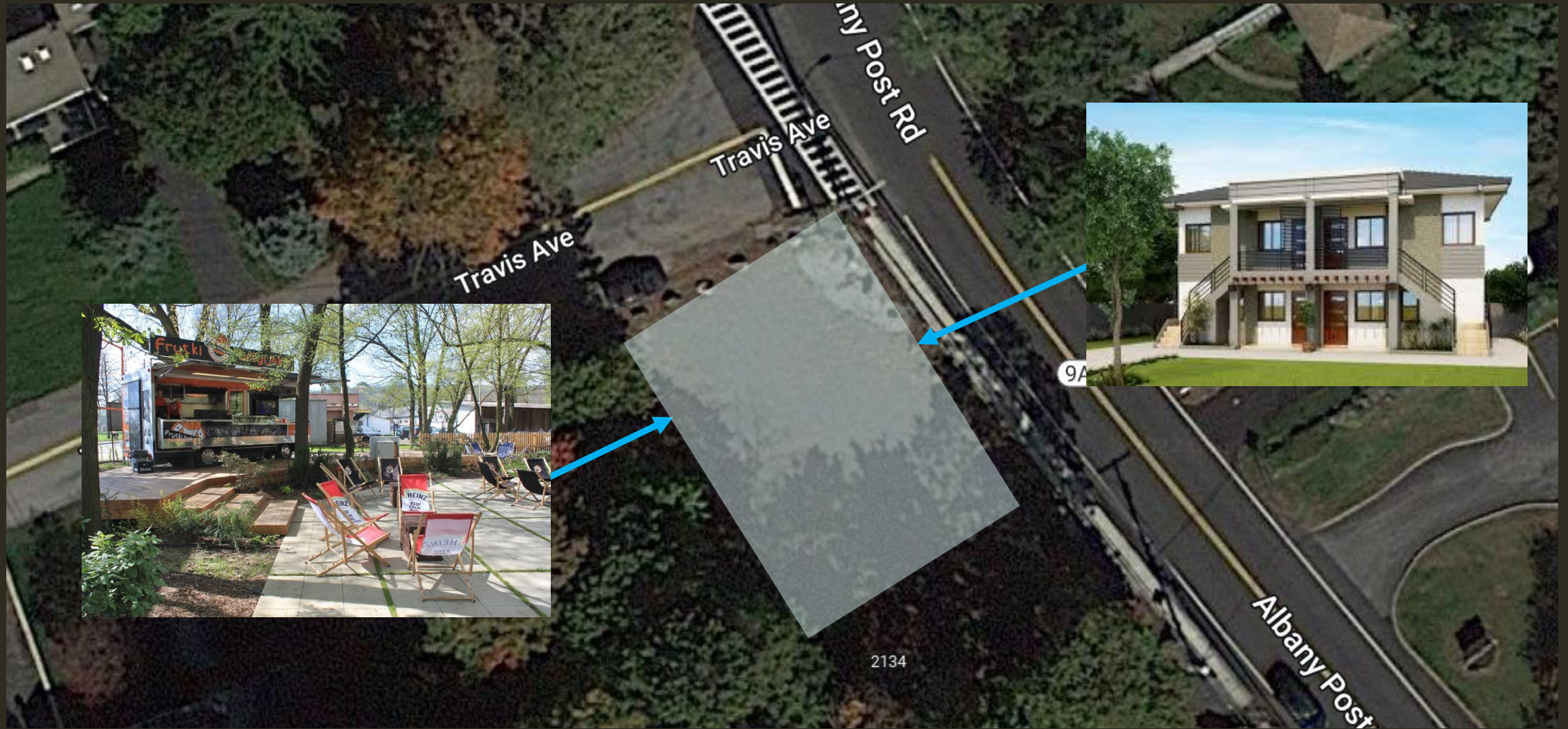


Project: Construct new mixed-use structures on existing, undeveloped/underutilized sites in the Montrose & Verplanck hamlet centers.

# A CONCEPTUAL EXAMPLE OF MIXED-USE INFILL DEVELOPMENT IN VERPLANCK



# A CONCEPTUAL EXAMPLE OF MIXED-USE INFILL DEVELOPMENT IN MONTROSE



# CORTLANDT WATERFRONT PARK AMPHITHEATER



Project: Construct an amphitheater in Cortlandt Waterfront Park

# HUDSON RIVER DISCOVERY CENTER (HRDC)



Project: Construct a 15,000 sf LEED certified discovery center on the Hudson River waterfront in Verplanck to function as a visitor's destination/museum hosting numerous historic, art, science, and recreation programs.

# BIKE SHARE PROGRAM



Project: Develop a bike share program to facilitate the movement of people in and between the twin hamlets of Montrose and Verplanck

# WATER TAXI BETWEEN VERPLANCK AND PEEKSKILL



Project: Create water taxi stop at the Quarry Park and Cortlandt Waterfront Park with connections to Peekskill, Croton, and other nearby municipalities.



# CONSTRUCT/IMPROVE SIDEWALK CONNECTIONS AND BIKE LANES



Project: Improve and complete connections for pedestrians and cyclists between Montrose and Verplanck

# NEXT STEPS

- DRI Video preparation
- Submission of DRI/NYF Application Due September 25, 2022